

# STORE, MANAGE & TRANSPORT

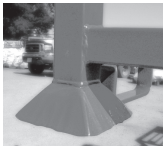
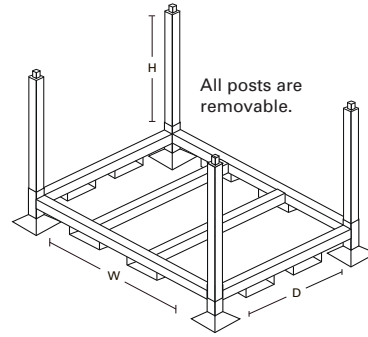
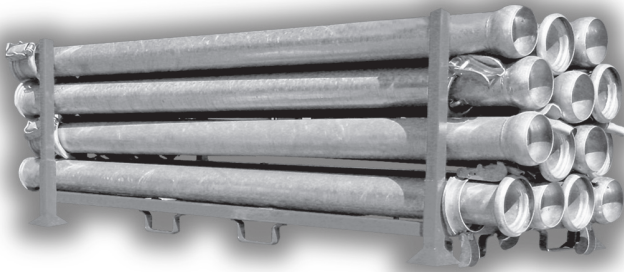
## WIL-LOC PIPE & HOSE STORAGE RACKS :

Yard space is always at a premium, and with product continually moving in and out, you need a storage system designed to handle this tough environment.

Wil-loc Pipe Racks increase storage space, improve efficiency in transport and prevent pipe damage. Racks are transportable and stackable, and have heavy-duty loading fork sleeves on all sides for easy loading onto a flatbed trailer.

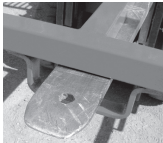
Job site tough, Wil-loc Pipe Racks will also decrease assembly and disassembly times on long pipe runs.

- + Saves valuable yard space
- + Prevents pipe & coupling damage
- + Helps manage job site inventory
- + Powder coat painted finish
- + Heavy-duty fork sleeves
- + 3,000 lb. load capacity
- + Can stack three high
- + 6" x 6" stacking targets
- + Removable posts
- + Breaks down when not in use



### FOOT PADS :

6" x 6" target leg pads provide a sturdy base for stacking.



### FORK SLEEVES :

Two sets of fork sleeves allow for easy moving of racks.



### REMOVABLE POSTS :

Leg posts are removable for ease of shipping, storage and assembly.

|                        | LARGE     | X-LARGE   |
|------------------------|-----------|-----------|
| <b>Capacity</b>        | 2500 lbs. | 3000 lbs. |
| <b>Weight</b>          | 175 lbs.  | 220 lbs.  |
| <b>Total Height</b>    | 45.5"     | 50.5"     |
| <b>Height</b>          | 37"       | 42"       |
| <b>Width</b>           | 91.5"     | 91"       |
| <b>Depth</b>           | 37"       | 80"       |
| <b>4" Capacity*</b>    | 42 pcs.   |           |
| <b>6" Capacity*</b>    | 25 pcs.   |           |
| <b>8" Capacity*</b>    | 16 pcs.   | 24 pcs.   |
| <b>10" Capacity**</b>  |           | 24 pcs.   |
| <b>12" Capacity**</b>  |           | 15 pcs.   |
| <b>Trailer Config.</b> | 2 across  | 1 across  |

Specifications subject to change without notice.  
 \* optimum capacity for 20' Wil-loc pipe.  
 \*\* optimum capacity for 10' Wil-loc pipe.



# STORAGE MADE SIMPLE

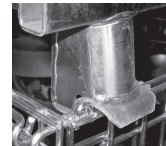
## WIL-LOC COUPLING STORAGE BINS :

Wil-loc Coupling Storage Bins simplify the management of your coupler inventory at your warehouse, distribution center or on the job site.

Available in two high-volume sizes, these wire mesh containers are constructed of welded galvanized steel and can handle a 4,000 lb. load capacity. Bins are stackable and have a half-drop gate on the long side of each container for easy access and identification of contents.

Wil-loc Coupling Storage Bins reduce product damage, improve efficiency in transport and provide better utilization of warehouse space.

- + Bins are ideal for jobsite inventory management, reducing equipment loss
- + Heavy-duty foot pads allow containers to be stacked four high
- + Wire mesh base will not collect dust, moisture or debris
- + Containers break down for storage
- + 4,000 lb. load capacity
- + Locking half-drop gate make contents easy to access and identify



## FOOT PADS :

Galvanized steel foot pads are designed for high load capacity and stacking.



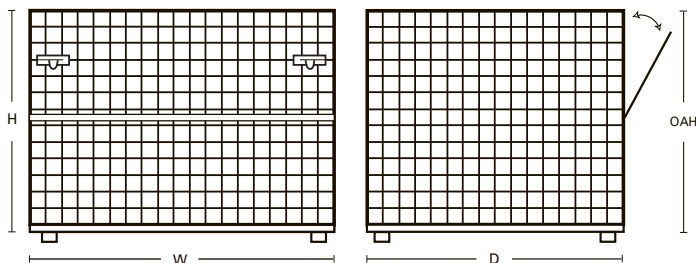
## DROP GATE :

A half-drop gate allows easy access and identification of parts.



## LATCHES :

Two slide latches secure the front gate and maximize storage.



| BIN SIZES | LARGE      | X-LARGE    |
|-----------|------------|------------|
| Weight    | 154 lbs.   | 187 lbs.   |
| Height    | 30"        | 36"        |
| Width     | 48"        | 48"        |
| Depth     | 40"        | 40"        |
| OAH       | 36"        | 42"        |
| Capacity  | 4,000 lbs. | 4,000 lbs. |

Specifications subject to change without notice.



PH 800 - 801 - 0123 // FX 763 - 717 - 0094 // [www.willoc.com](http://www.willoc.com)

© 2006 Wil-loc, Inc. All Rights Reserved.